

Old Trails Journal

The newsletter for supporters of the Old Trails Museum and Winslow Historical Society

You Are Invited!

OTM Fall History Highlight

Sean Evans presents
Fred Harvey: Branding the Southwest

Saturday,
Oct 31, 2 pm
at La Posada,
303 East 2nd

Free Admission

WHS Annual Meeting

Saturday,
Nov 7, 2 to 4 pm
at Winslow
Visitors Center,
523 West 2nd

Performance by
Tommy Dukes

Free Admission,
Reception,
Board Elections,
Door Prizes

OTM Fall History Highlight on October 31

OTM will offer its Fall History Highlight on Saturday, October 31, at 2 pm at La Posada Hotel with the free presentation of *Fred Harvey: Branding the Southwest*.

NAU Archivist **Sean Evans** from Northern Arizona University's Cline Library will present this visual walk through the history of the Fred Harvey company in the Southwest from the 1890s through its ownership by the Amfac corporation from 1968 to 1988. Evans' presentation will also serve as a preview of the Cline Library's exhibit of the same name, which opened on October 19 and runs through August 1, 2016.

The Winslow Harvey Girls will also have their popular Harvey House Trunk Show on display starting at 1 pm. This dedicated group of volunteers is committed to preserving the history of **Fred Harvey**, the Harvey Girls, and La Posada Hotel. Their trunk show features original china used in the dining cars and Harvey Houses along the Santa Fe line. (Continued on Page 2)

WHS Annual Meeting on November 7

The Winslow Historical Society will host its 2015 Annual Meeting at the Winslow Visitors Center/Hubbell Trading Post on Saturday, November 7, 2015.

The free event begins with a reception and performance by Arizona Blues Hall of Fame inductee **Tommy Dukes**. Dukes relocated to Winslow from Mississippi at age 10. His professional career began just five years later and has resulted in many original songs, several albums recordings, and his induction into the Hall of Fame in 1997.

During the reception, attendees can join or renew their memberships for 2016; buy the museum's 2016 historical calendar, *Railroad Town: The Santa Fe Railway in Winslow*; and take a ticket for a chance to win a terrific door prize donated by OTM, Winslow Public Library, Winslow Arts Trust, and several WHS Board members.

The WHS Annual Meeting will begin at about 2:45 and include brief reports on museum activities over the past year, the election of new board members, and the door-prize drawing.

Please join us for the Winslow Historical Society's annual celebration of our membership, which is a reflection of OTM's community support and the backbone of our grassroots fundraising efforts. With you, we have a future; without you, we're history!

2015 Fall History Highlight (Cont.)



NAU Archivist Sean Evans

Evans has been an archivist at Special Collections and Archives at NAU's Cline Library since 1981. He holds a Masters in History from NAU and a Masters in Information Research and Library Science from the University of Arizona.

In addition to the Fred Harvey exhibit, Evans has curated two others for the Cline Library: *Route 66 in Arizona: Don't Forget Winona* in 2009 and *The Flagstaff All-Indian Powwow* in 2012.

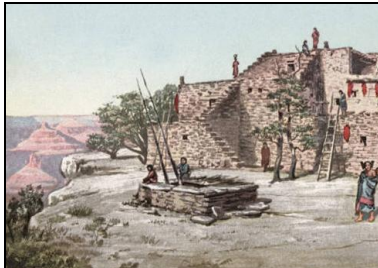
Starting in 1876, Englishman and entrepreneur Fred Harvey opened a series of "Harvey Houses" in cooperation with the Santa Fe Railway that were considered America's first restaurant chain. After Fred's death in 1901, son **Ford Harvey** developed the company's focus on destination tourism to the Southwest.



The Cline's promotional postcard for the *Branding the Southwest* exhibit

Both the *Branding the Southwest* presentation and exhibit will explore the company's evolution, from small clapboard cafes to elegant rail-side hotels, through the lens of the Cline Library's Fred Harvey Company Collection.

The Cline's collection illustrates the company's influence on the development of dining and tourism in the Southwest through material on the Harvey Girls, the Fred Harvey Indian Department, and Grand Canyon operations.



A postcard of Hopi House from the Cline's Fred Harvey Company Collection

Documents include menus, brochures, guest registers, press releases, architectural drawings, art work, and over 5,000 photographs of Fred Harvey concerns at the Grand Canyon and elsewhere.

The 2015 Fall History Highlight is scheduled to coincide with the *Branding the Southwest* exhibit run, as well as with a special panel discussion and open house at the Cline Library on November 4 from 6 to 9 pm.

Along with La Posada Hotel, OTM has loaned several items from our Fred Harvey Collections to the Cline exhibit, including china, glassware, and textiles. Some of OTM's loaned items have very recently come full circle.



Director Ann-Mary Lutzick drops off OTM's loaned items to the Cline staff.

In 1985, **Allen and Carol Naille** donated their Fred Harvey collection to the Cline Library. Allen Naille was president of the Fred Harvey Corporation at the Grand Canyon during the transition from the Harvey family to Amfac Inc.

In 1996, the Cline Library donated the three-dimensional objects from the Naille Collection to the Museum of Northern Arizona (MNA), which generously donated a portion of that collection to OTM this past August.

Some of the Naille Collection is already on display on the OTM floor. Special thanks to MNA's Director of Collections **Elaine Hughes** and Registrar **Amber King** for all their help in making this donation happen!

The 2015 Fall History Highlight is a partnership program between OTM and the Winslow Arts Trust.

OTM History Highlights Update

OTM continued its History Highlight series when geologist **Wayne Ranney** presented *Ancient Landscapes of the American Southwest* on April 19 at La Posada Hotel. Ranney used photographs, illustrations, and maps to take 40 attendees on a fascinating tour through time of the Colorado Plateau.

Dr. Laura Tohe presented *Armed with Our Language, We Went to War: The Navajo Code Talkers* on August 15, also to 40 attendees at La Posada. She explored the Code Talkers' cultural background, how the code was devised and used, and how Navajo spiritual beliefs were used to treat post-traumatic stress disorder.

Both the 2015 Spring and Summer History Highlights were partnerships with the Winslow Arts Trust and made possible in part by Arizona Humanities. The Summer Highlight was scheduled to coincide with the Flagstaff, Tucson, and Prescott runs of the Arizona Historical Society's (AHS) exhibit, *Above and Beyond: Arizona and the Medal of Honor*.

AHS developed *Above and Beyond* to pay tribute to the Arizonans who have received the highest military award given in the United States Armed Forces, including Winslow's own **Jay R. Vargas**. Through a special partnership, OTM loaned several items donated to our collections by Colonel Vargas to the AHS exhibit.

Col. Vargas, who graduated from Winslow High School in 1956 and received the medal in 1970, attended a special member reception prior to the exhibit opening in Flagstaff on June 11. In addition to answering questions from the audience, he visited with Winslow Historical Society Board Member **Marsha Childers** and her husband, **Mike Childers**, who graduated in the WHS Class of '56 with Col. Vargas.

Above and Beyond ended its run at the AHS Pioneer Museum in Flagstaff on October 25, but it will be on display at the AHS Museum in Tucson from November 12 to May 7, 2016, and at the Sharlot Hall Museum in Prescott from May 21 through November 2016.

For the 2016 Winter History Highlight, **Carolyn O'Bagy Davis** will present *Arizona's Historic Trading Posts* on February 13. The presentation is drawn from her new book of the same name, currently on sale in the OTM Store. OTM was a stop on Davis' research trail, and several images from the museum's collection are in the book.

Davis will explore how early traders traveled through Arizona Territory selling goods from their wagons. Soon they built stores that evolved into trading and social centers where wool, sheep, and Native arts were exchanged for food and necessities. Navajo trading posts are best known, but trading posts existed on every reservation in Arizona.

Traders became the intermediaries between Native peoples and the outside world, providing not only hard goods but other services including translating, correspondence, and transportation. Trading posts also became destinations for artists, authors, and tourists. Trading posts have mostly disappeared, but they remain an historic and romantic part of the Southwest. Details on the talk will be posted soon on the OTM Website and Facebook page.



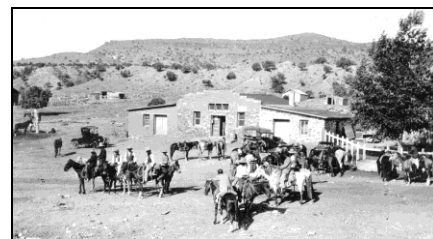
Ranney (center left) with OTM Volunteer Patricia Raygor and the Lutzicks



Tohe with a photo of one of the Code Talkers she interviewed



Col. Vargas with the Childers



Indian Wells Trading Post in 1914

Supporter Spotlight



Attendees enjoy the E&O Kitchen dinner.

Thanks to the Board of the Winslow Historical Society for hosting a terrific OTM Volunteer Thank-You Party! Despite the windy day, we had a record turnout of 50 volunteers and their spouses on June 1 at McHood Park.

Attendees enjoyed wonderful Mexican food from the E&O Kitchen. **Linda McHood**, wife of WHS Board Member **Gordon McHood**, made delicious jalapeno jellies as gifts for each volunteer, which were decorated by Board Members **Marsha Childers** and **Jackie Landis**.

Board President **Dave Hartman** arranged for **Tommy Martinez** to take attendees up Clear Creek in his boat. The sunset and petroglyphs made these rides truly special.

OTM prospers thanks to donors and volunteers who are so generous with their possessions, time, and talents. OTM is in need of new volunteers, so if you're interested in working with a great group of people and learning more about Winslow's history, please come join the fun!

From the Museum Floor

OTM's 2016 historical calendar, *Railroad Town: The Santa Fe Railway in Winslow*, is now available at the museum, La Posada Hotel, Arizona 66 Trading Company, On the Corner Gifts, the Scoop, the Winslow Chamber of Commerce, and Winslow Dental. Still priced at \$10, the calendar makes a great holiday gift!

The 2016 edition serves as a companion to OTM's new permanent exhibit, *The Story of Winslow*, which debuted on the museum floor in August 2015. The exhibit text panels are spread throughout the museum and tell the overall history of the town alongside images and artifacts donated by decades of museum supporters.

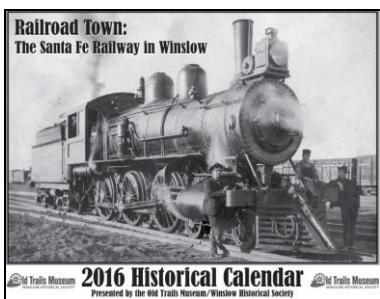
In the calendar, excerpts from the railroad-related panels are paired with images that have never before been published in an OTM book, exhibit, or calendar. Additional text was adapted from *Winslow*, the museum's *Images of America* title. Sources for additional Santa Fe Railway history included documents from the museum's archival collections; articles from the *Winslow Mail*; and the BNSF brochure, *History and Legacy: The History of BNSF: A Legacy for the 21st Century*.

OTM Director **Ann-Mary Lutzick** developed the calendar, and the Print Raven of Flagstaff did the graphic design and printing. Thanks to **Helen Jane Pollard** for loaning her wonderful photos; otherwise, all images are from the Old Trails Museum Collection.

The calendar is once again a fundraiser for the museum thanks to our generous advertisers: Arizona 66 Trading Company, Bojos Grill & Sports Club, Casey's Hardware, Cross U Management Company, Dominique's On the Corner, Joe's Glass and Locksmith Shop, La Posada Hotel, the Leavitt Group, Mojo Coffee Company, Robert & Clint Cox Automotive Service, *The Scoop Advertising*, Snowdrift Art Space, and the Winslow Chamber of Commerce & Visitors Center.



A boat leaves the dock with partiers ready for an adventure.



OTM's 2016 historical calendar



A Santa Fe diesel locomotive idles behind La Posada in 1971.

Thoughts from the Director

When I graduated from high school and college in the 1980s, doing schoolwork on personal computers was not common. But by the time I returned to school for my history masters in the late 1990s, computer technology had revolutionized the world, and the history profession in the process.

True, computers bring constant expenditures, technical problems, and learning curves. Here I must give endless thanks to OTM's Collections Specialist, **David Andreasen**, for acting as our "I.T. guy" as well!

But the challenges are worth it. At OTM, certain software and the internet have allowed us to create and share exhibits, program materials, and newsletters ourselves, and at very low cost. What's more, technology allows that work to have an extended life, even though the original purpose was temporary.

As of this month, the *Journeys to Winslow*, *Winslow-Lindbergh Regional Airport*, and *Snowdrift Art Space* exhibits are permanently available on the OTM Website's new "Exhibits" page (*The Women of Winslow* is coming soon). The website is also filled with information and images from past programs, and all of the newsletters are available there as well.

Though nothing compared to what's happening in the truly innovative field of "digital history," the OTM Website – and by extension, your smart phone -- are now filled with content about Winslow's fascinating history. I feel fortunate to be working in the public history field during a time when the benefits of technology are readily accessible by museums of all types – even small, rural ones.

Winslow Historical Society 2016 Membership Renewal Form

(All contact information is kept private by the Old Trails Museum.)

Name: _____

Mailing Address: _____

Phone & E-mail: _____

Membership Level: _____

Enclose this form with a check payable to the Winslow Historical Society and mail it to:
Old Trails Museum, 212 N Kinsley Ave, Winslow, AZ 86047

Student Membership (max age 22): \$5 for biannual newsletter, special member events, 10% discount in the OTM Store

Individual Membership: \$15 for biannual newsletter, special member events, 10% discount in the OTM Store

Family/Group Membership (up to 4 people): \$30 for biannual newsletter, special member events, 10% discount in the OTM Store

Patron Membership: (1 to 2 people): \$100 for Basic Benefits plus calendar, newsletter and website recognition

Benefactor Membership (1 to 2 people): \$250 for Basic Benefits plus calendar, newsletter and website recognition, choice of historic photograph

Lifetime Membership (1 to 2 people): \$500 for Basic Benefits plus calendar, newsletter and website recognition, choice of historic photograph, autographed copy of *Winslow*

With you, we have a future; without you, we're history!

Winslow Historical Society 2015 Board of Directors

President

David Hartman

Vice-President

Ruth Gant

Treasurer

Gordon McHood

Secretary

Kaye Ricks

Directors

Marsha Childers

Anne Doyle
(Flagstaff)

Louis Gill

Michelle Hernandez

Jackie Landis

Membership Acknowledgments

(Winslow resident unless noted)

Lifetime Members

- Allan Affeldt
- Robin & Teresa Boyd
- Judy Douglas
- Roberta Gilman & Robert Wilson, Santa Barbara
- David & Ann Hartman
- Mary Heldt
- Randy Hummel (Honorary)
- Tess & Lawrence Kenna
- Dan Lutzick (Honorary)
- Patricia Raygor
- Paul Ruscha, LA & Winslow

2015 Benefactor Members

- Judy & Robert Prosser

2015 Patron Members

- Carolyn Davis, Tucson
- Anne Doyle, Flagstaff
- Darlene Kennedy & Robert Zaccaria
- Roger & Donna Muhlenkamp, Flagstaff
- Dr. John & Judy Sears
- George & Adele Shaw, Grand Junction, CO
- Doris A. Tyler, Show Low
- Winslow Chamber



ADDRESS:
212 N Kinsley Ave
Winslow, AZ 86047

PHONE:
928-289-5861

E-MAIL:
info@oldtrailsmuseum.org

WEBSITE:
www.oldtrailsmuseum.org

OTM is online at
www.oldtrailsmuseum.org,
Arizona Memory Project,
& Facebook.



Support the Old Trails Museum

The Old Trails Museum is owned and operated by the Winslow Historical Society, a 501(c)(3) nonprofit corporation.

The Old Trails Museum is funded primarily by the City of Winslow, with additional support from memberships, donations, and sales. We welcome donations of cash as well as of equipment, supplies, and services.

Become a member to enjoy *Old Trails Journal*, invitations to special member events, and 10% off in the OTM Store on Navajo and Hopi arts and crafts, regional history books, and our annual Winslow historical calendars.

Please join us in our efforts to keep the Old Trails Museum thriving. With you, we have a future; without you, we're history!

Visit the Old Trails Museum

The Old Trails Museum is open Tuesdays through Saturdays from 10 am to 3 pm. Admission is free. Photography, group tours, and researchers are welcome.

OTM is located in the heart of Winslow's historic downtown business district and across the street from the Standin' on the Corner Park. There is free parking downtown, and our exhibits are wheelchair accessible.

Housed in the 1921 First National Bank building, OTM has retained the original marble-faced counters, mosaic tile floor, and vault, which provide a historic backdrop for the museum's exhibits and collections.

Our Mission...

Founded in 1997, the Winslow Historical Society receives, preserves, and interprets information and artifacts representing the history and cultures of the Winslow area, in order to engage and enlighten all visitors to the Old Trails Museum's exhibits and programs.



212 Kinsley Ave
Winslow, AZ 86047

COMPANY NAME
STREET ADDRESS
CITY, ST 22134